

From: [Wiechman, Lief](#)
To: [Pat Deibert](#)
Subject: Fwd: maps
Date: Thursday, February 26, 2015 1:47:45 PM
Attachments: [NorthGreatBasin_PH_final.pdf](#)
[Rangewide_PH_Final.pdf](#)
[WYBasin_PH_final.pdf](#)
[NoCent_MT_PH_final.pdf](#)

----- Forwarded message -----

From: **Wiechman, Lief** <lief_wiechman@fws.gov>
Date: Thu, Feb 19, 2015 at 12:24 PM
Subject: Fwd: maps
To: Kathleen Hendricks <kathleen_hendricks@fws.gov>

Here you go.

Lief Wiechman

Sage-grouse Ecologist
U.S. Fish & Wildlife Service
Mountain-Prairie Region
Cell: 307.214.8426
Office: 307.772.2374 x236
lief_wiechman@fws.gov

----- Forwarded message -----

From: **Juliusson, Lara** <lara_juliusson@fws.gov>
Date: Wed, Nov 19, 2014 at 9:07 AM
Subject: maps
To: Lief Wiechman <lief_wiechman@fws.gov>

Lara Juliusson, Geographer/Ecologist
Sage-grouse Energy Team
U.S. Fish and Wildlife Service,
Region 6, Lakewood, CO
Lara_Juliusson@fws.gov
303-236-9876
<http://www.fws.gov/mountain-prairie/>

Join me on LinkedIn

<http://www.linkedin.com/pub/lara-juliusson/5/918/7a4>

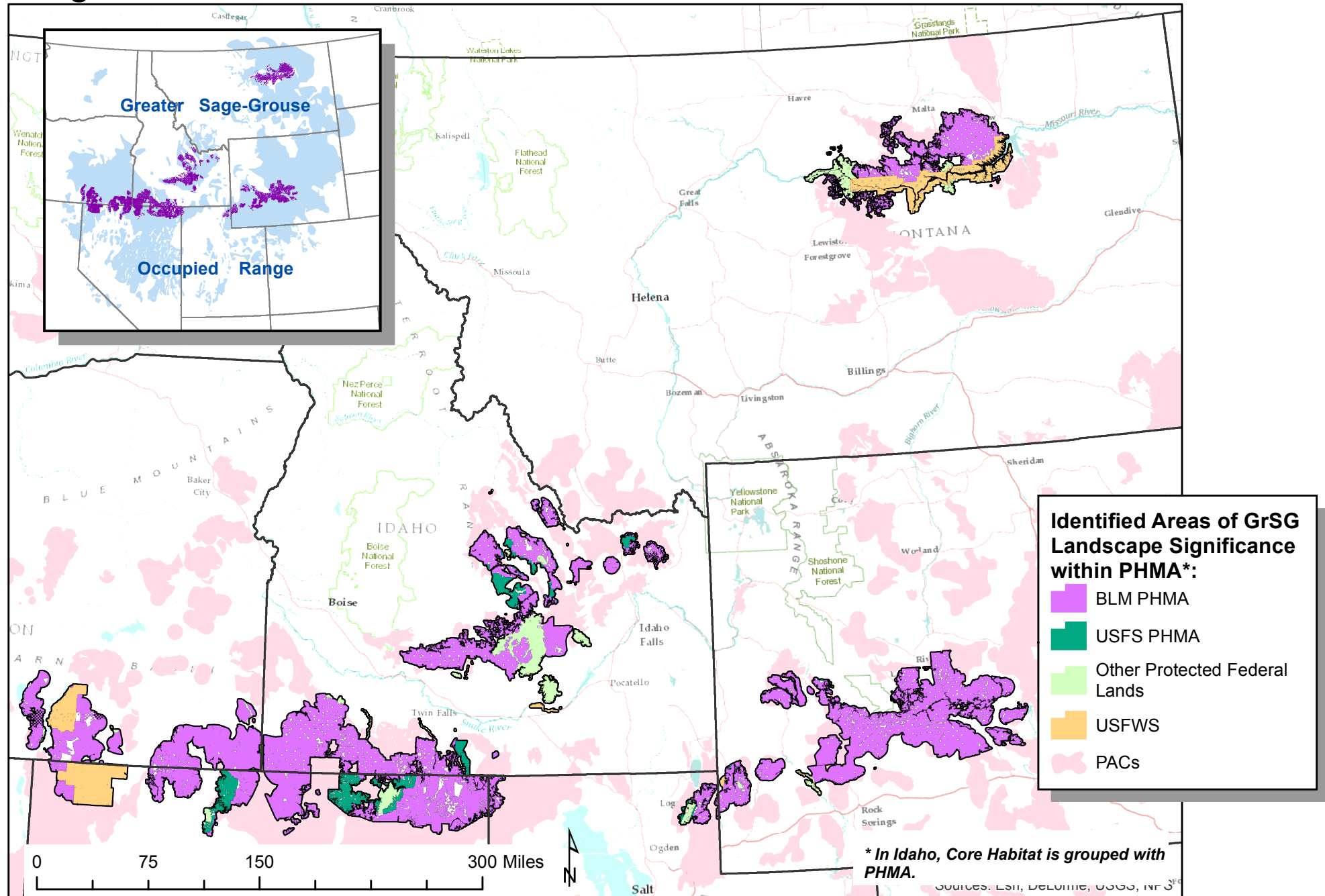
Identified Areas of Great Basin Landscape Significance within PHMA*:

- BLM PHMA
- USFS PHMA
- Other Protected Federal Lands
- USFWS
- PACs

* In Idaho, Core Habitat is grouped with PHMA.

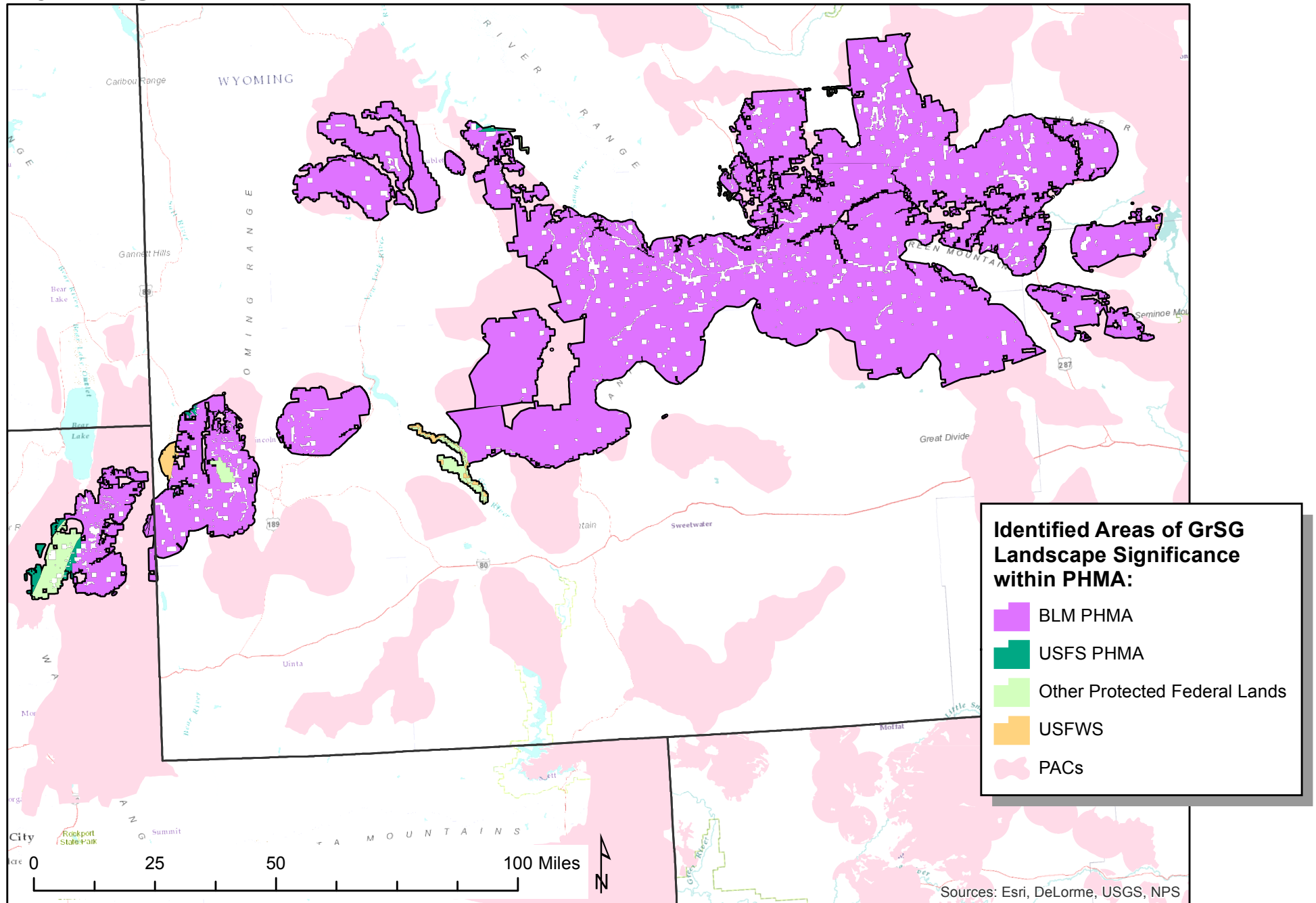
*Pre-Decisional; For Internal Review Purposes Only. Do Not Distribute.
PHMA current as of October, 2014.*

Identified Areas of GrSG Landscape Significance within BLM/USFS PHMA: Rangewide



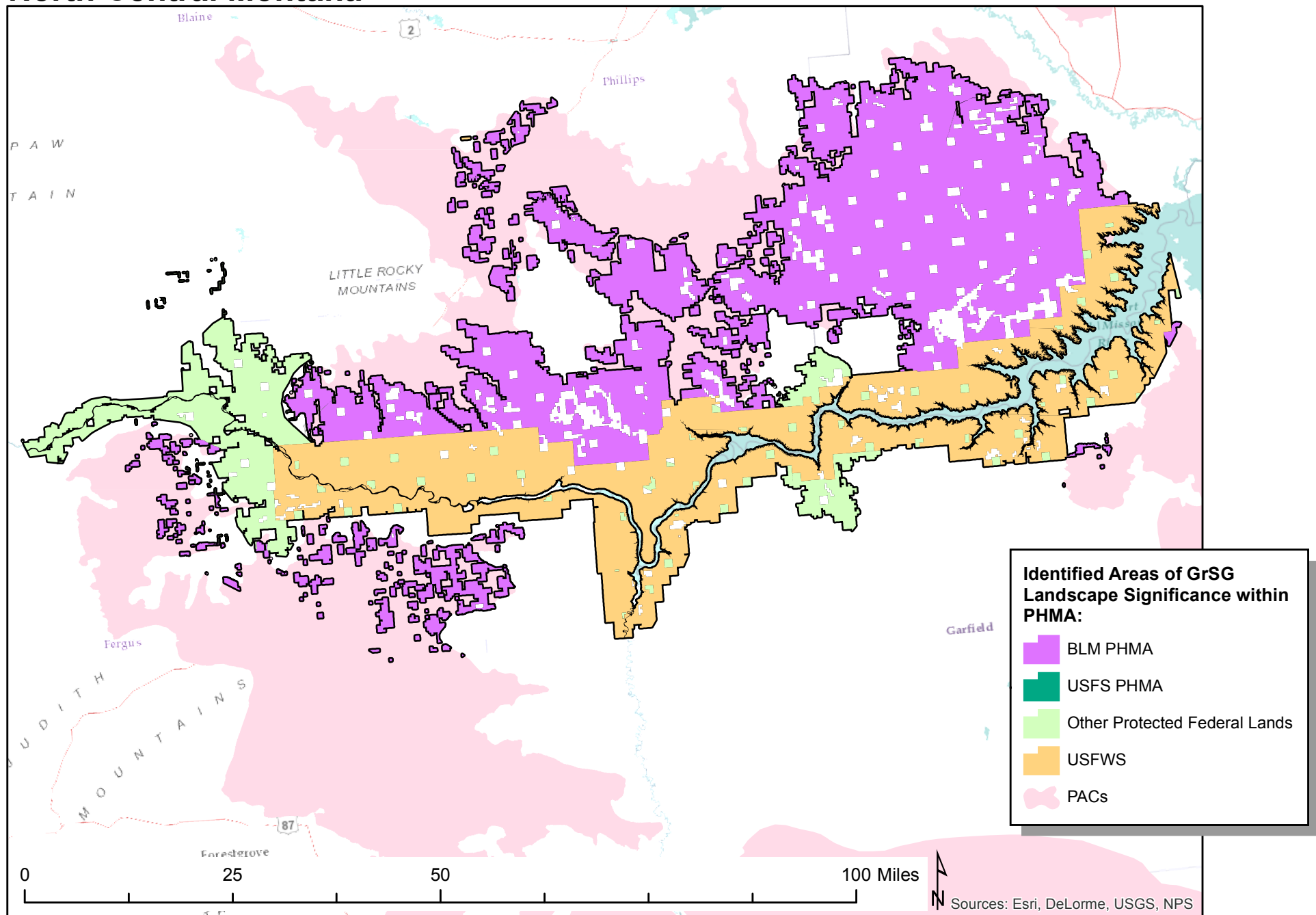
Pre-Decisional; For Internal Review Purposes Only. Do Not Distribute.
PHMA current as of October, 2014.

Identified Areas of GrSG Landscape Significance within BLM/USFS PHMA: Wyoming Basin



*Pre-Decisional; For Internal Review Purposes Only. Do Not Distribute.
PHMA current as of October, 2014.*

Identified Areas of GrSG Landscape Significance within BLM/USFS PHMA: North Central Montana



Pre-Decisional; For Internal Review Purposes Only. Do Not Distribute.
PHMA current as of October, 2014.